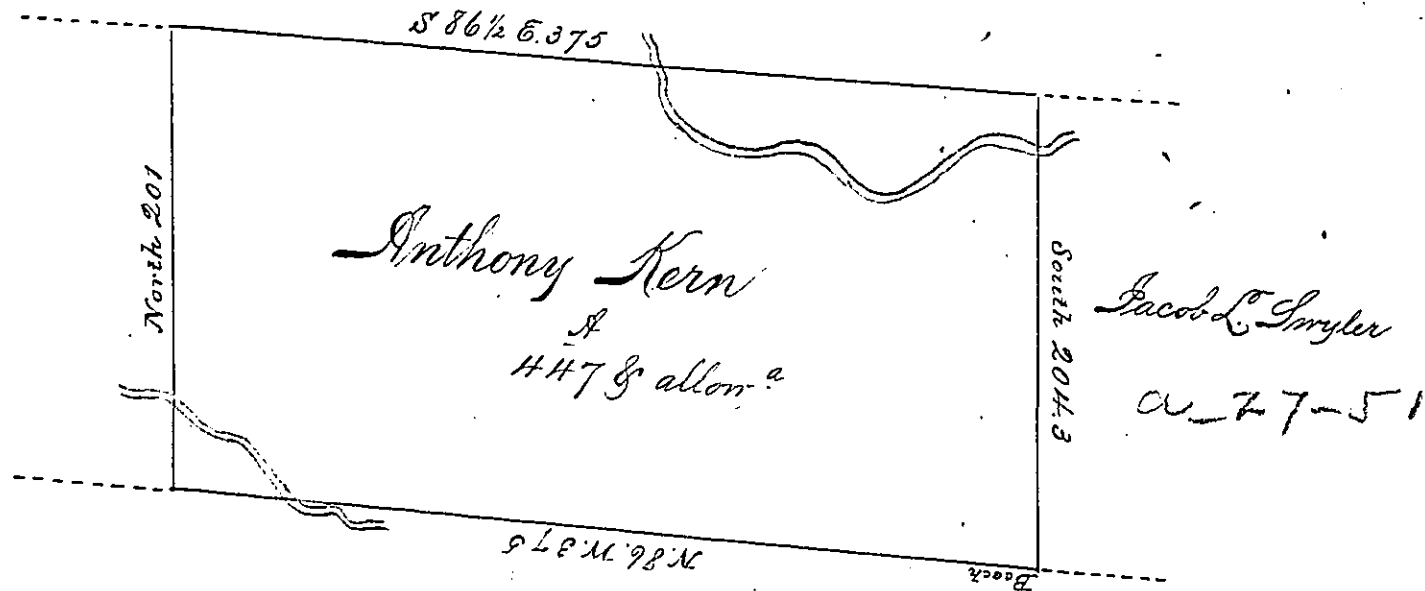


State of New York

Edward Price

a 6-71



Thomas Shoemaker

D 27-281

A Draught of a tract of Land Called  
 Situate adjoining land of Jacob L. Smyler and  
 others in Luzerne County Surveyed on the 14<sup>th</sup>  
 day of September 1787 for Anthony Kern by  
 Virtue of a warrant dated the 26<sup>th</sup> day of July 1787  
 Containing four Hundred and forty seven Acres  
 and allowance of Six p. Ct. for Roads &c

by Wm Gray D.S.

To John Lukens Esq<sup>r</sup> }  
 Survey<sup>r</sup> Gen<sup>l</sup> }

IN TESTIMONY that the above is a copy of the original remaining on file in the  
 Department of Internal Affairs of Pennsylvania, made con-  
 formably to an Act of Assembly approved the 16th day of  
 February, 1833. I have hereunto set my Hand and caused  
 the Seal of said Department to be affixed at Harrisburg, this

fifth day of November 1895.

James W. Patton  
 Secretary of Internal Affairs.